

## Our Parish's Increased Support Program

St. Mary of the Assumption is committed to fostering a community of faith, encouraging growth in all facets of each member's spirituality. Like our parish, each parish in the Archdiocese of Boston will be conducting an increased support program. It is a unique opportunity for us to come together as one spirit, one soul as a faith community of 1.8 million Catholics sharing their individual time, talent and treasure with their parish family. Parishes are the communities in which we celebrate our faith and Christ's love, and it is through these communities that we continue to teach and nurture our next generation of Catholics.

### Making a commitment to your parish

Each of us is well aware of the expenses involved in financing our own households. The same is true for St. Mary of the Assumption. Whatever you decide to commit, your gift should have some relationship to how you live and be proportionate to your ability.

#### IT'S UP TO YOU

Our parish is a reflection of each one of us. This means:

- You determine what you can and will give
- Your generosity determines the budget
- Your generosity determines how well we maintain our facilities
- Your generosity determines what funds will be available for programs and services for parishioners of all ages
- Your generosity determines what we can (or cannot) do for others through outreach services

### How can you help

#### St. Mary of the Assumption Parish?

The suggested guidelines for giving presented below are designed to assist you in considering your annual commitment to St. Mary of the Assumption. We understand that everyone's financial ability will be different. We hope that you will prayerfully consider supporting us at a level that you know you can reach. Your generous commitment will determine our course for the coming year. It is your investment that enables St. Mary of the Assumption Parish to provide pastoral care to all of us as individuals, to our children and families, and to the community.

New Weekly Contribution based on a percentage increase			
Your Current Offertory Contribution	10% Increase	20% Increase	30% Increase
\$1 - \$4	-	-	\$5
\$5	\$5.50	\$6	\$6.5
\$10	\$11	\$12	\$13
\$15	\$16.50	\$18	\$19.50
\$20	\$22	\$24	\$26
\$25	\$27.50	\$30	\$32.50
\$30	\$33	\$36	\$39
\$40	\$44	\$48	\$52
\$50	\$55	\$60	\$65
\$75	\$82.50	\$90	\$97.50
\$100	\$110	\$120	\$130

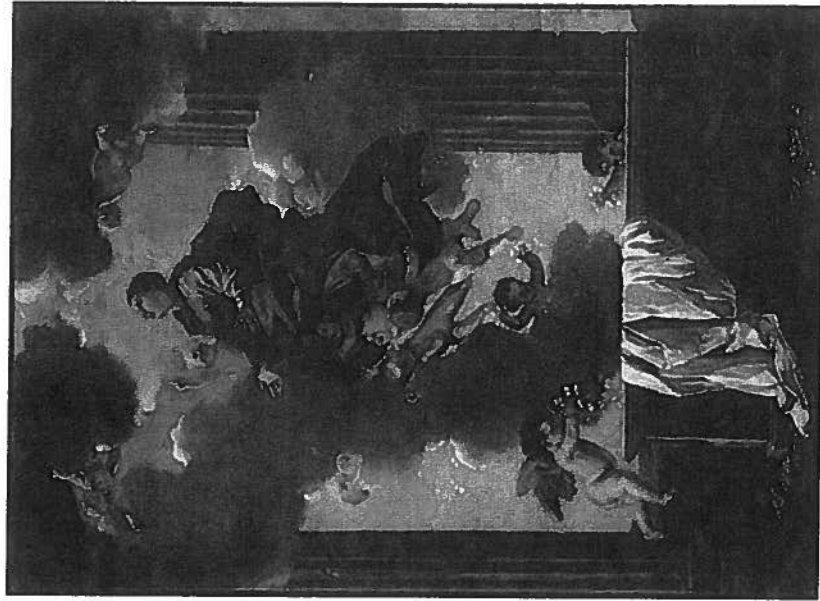
*"As each one has received a gift, use it to serve one another as good stewards of God's varied grace." (1 Peter 4: 10)*

# St. Mary of the Assumption

Revere, MA

Increased Support Program

Fall 2010



Father Paul Aveni, Pastor  
Father James Barry, Incoming Pastor

## Parish Support Program

### Who we are-

With our parish rooted in the devotion of Italian immigrants from the West Revere in 1931, we are a dedicated, loving community of close to 500 families coming together rich in tradition and faith. Celebrating our 60<sup>th</sup> anniversary in April 2007, we hope to continue to grow in our service as a faith community in the years to come.

### What we want to do...Is a 20% increase in the collection possible?

In October of 2009, we asked that parish members help us to achieve a Grand Annual Collection goal of \$39,000, a 5 percent increase from last year's goal. However, today, we are still trying to meet the needs of our parish by addressing all of our expense obligations, which come as a burden to our general financial obligations. These obligations include the heating system, lighting improvements, installation of a security surveillance system, resurfacing parking areas, and establishing a reserve fund for deferred maintenance to name a few.

We hope that our parishioners can also encourage individuals you know who have not been practicing their faith, to come join us at our parish.

### Statistical Review

We are also happy to provide a snapshot of an average Sunday collection, detailing contributions by level.

#### General Data

# of registered house-holds: **400-420**  
 # of household using envelopes/checks: **160-200**  
 Average weekly offertory: **\$2800** (First Collection)

### Time and Talent—

The gifts of talent you have shared with St. Mary of the Assumption have been used to grow the parish community through our programs and ministries and in the care and maintenance of our buildings. However, our many active ministries and programs can always benefit from the generosity of your time and talent. If you are interested in giving more of your time we would be grateful for more help and additional volunteers with the following:

Ushers, Extraordinary Ministers of the Eucharist, Religious Education Teachers, Readers, Altar Servers, Maintenance Committee, and Counting Committee.

### Treasure—

In order for this Parish Support Program to be successful we need every family to participate. If every household would be willing to make some sacrifice to give a little bit more to your spiritual home as you have before, St. Mary of the Assumption can continue its mission.

Suggested Weekly Commitment based on income			
Weekly Income	1% Commitment	3% Commitment	5% Commitment
\$280	\$2.80	\$8.40	\$14
\$320	\$3.20	\$9.60	\$16
\$480	\$4.80	\$14.40	\$24
\$600	\$6	\$18	\$30
\$800	\$8	\$24	\$40
\$1,000	\$10	\$30	\$50
\$1,200	\$12	\$36	\$60
\$1,500	\$15	\$45	\$75
Other	?	?	?

## St. Mary of the Assumption Financial Statement

St. Mary's has worked prudently to run our parish efficiently and effectively. Like any business, we tried to manage our resources and operating costs. The following are a snapshot of our financials from the 2010 fiscal year :

2010	
<b>Income</b>	
Sunday Parish Collections	\$208,173 58%
Grand Annual Appeal	\$36,010 10%
Masses, Funerals, Baptisms, Weddings	\$19,041 5%
Net Bingo Proceeds	\$35,500 10%
Religious Education Fees	\$13,010 4%
Fundraising	\$5,684 0%
Donations	\$19,729 5%
Parish Organization Activities	\$3,110 1%
Rental Income	\$16,374 10%
Other	\$6,610 2%
<b>Total Income</b>	<b>\$360,564</b>
<b>Expenses</b>	
Payroll and Related Expenses	\$154,241 46%
General Operations	\$29,912 9%
Liturgical and Music Expenses	\$32,591 10%
Maintenance	\$31,637 9%
Utilities	\$11,668 3%
Religious Education	\$9,423 3%
Rectory and Household	\$10,898 3%
Property and Liability Insurance	\$14,953 4%
Archdiocesan School Tax Assessment	\$8,991 3%
Heat	\$22,903 7%
Major Repairs—Re-shingle Rectory Roof	8,900 7%
<b>Total Expenses</b>	<b>\$336,117</b>
<b>Net Income (Deficit)</b>	<b>\$24,447</b>